



Incident Management Team

Braden Britt, IC

Fire Information (509) 808-6720 (Call or Text)

News Release – Lower Granite Fire

FINAL UPDATE

August 2, 2024

Pomeroy, WA: On July 29th, 2024 around 11:42 am The Lower Granite Fire ignited. The fire quickly spread east with strong, gusty winds, threatening croplands, cattle, rangeland and structures. Initially, Garfield County Fire District 1 responded to the incident; working with local farmers and ranchers to prevent additional fire progression. As the fire continued to grow, aerial support and additional resources were requested. Washington State Patrol authorized the response of state firefighting resources, mobilizing four strike teams of district fire engines to respond to the fire.

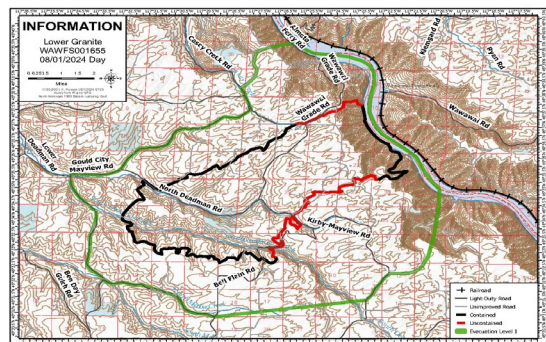
Aviation assets began fire retardant drops around structures at risk, while Initial Attack crews worked the active fire zone.

The Northeast Washington Incident Management Team Type 3 Team 1, took command of the fire on Tuesday, July 30th at 10:00am. Aviation and ground operations began immediately to identify unburned fuels, hazard zones, and mitigate hotspots. Initial assessment identified structures, rangeland, crops, and cattle within the fire zone. Concentrated efforts in the Kluge Canyon area just north of Tramway Road, northern flank fire line on Wawawai Grade Road, and on the south flank fire line on Kirby-Mayview Road prevented the fire from growing. Crews worked on the interior to clear hotspots that threatened unburned fuels.

During fire operations, it was discovered that a large area of unburned fuels located in the canyon between the Snake River and the Uplands on Mayview road posed a high risk to the community, firefighters, and rangeland if left untreated. As a precaution, fire mitigation strategies were implemented to reduce the risk of flareups while also helping secure and maintain the fire line.

On Thursday, August 1, 2024 at 8:00 am fire evacuation levels were downgraded to level 1. As of 7pm that evening the Lower Granite Fire was 59% contained, with 144 personnel assigned to the incident.

Quick Facts Lower Granite Summary	
Approximate Size	14,482 acres
Containment	Overall: 75%
Resources on Fire	1- 20 Person Hand Crew 12 - Firefighting Engines 3 - Water Tenders 1 - Helicopter (Type 2)
Total Personnel	144
Fire Danger	Extreme
Values at Risk	Farmland/Grain Crops, Rangeland/Cattle, Structures, Power Infrastructure



Crews worked throughout the night and into the following day on the south flank on Wawawai Grade Road, and along the south flank on Kirby-Mayview Road while other crews worked along the fire perimeter continuing to address hotspots, snags, and checking structures for continued heat 300 feet round the perimeters.

Around 1 pm that afternoon, fire crews reported increased fire activity in the canyon between the Uplands and Snake River area. Smoke was visible as fire crews engaged these flareups with in the canyon. Aviation assets performed water drops, as hand crews monitored and secured the perimeter preventing embers from breaching the Uplands plain. Crews monitored the canyon overnight for any additional activity.

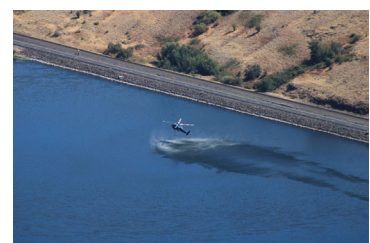
On August 3rd, Wildland crews will begin demobilizing with the fire command being turned over to local officials with anticipated containment goals of 99% by this evening. The Garfield County Fire District 1 will resume command.

The Northeast Incident management Team Type 3 Team 1, would like to thank the town of Pomeroy and the surrounding communities for their support and hospitality in helping make this operation successful.

Current evacuations are updated on the Garfield County Sheriff's Facebook page at:

<https://www.facebook.com/GarfieldCountySheriff>

PUBLIC AND FIRE FIGHTER SAFETY IS THE NUMBER ONE PRIORITY
Do not enter into the burn area of the fire. Fire weakened trees can fall suddenly and hot deep ash pits can cause severe burns and are present within the burned area.



This Fire Update was produced by Cody LeClerc, Northeast Washington Interagency Incident Management Team 1

**Follow Us for
Updated Fire
Information:**



@NewFireInfo